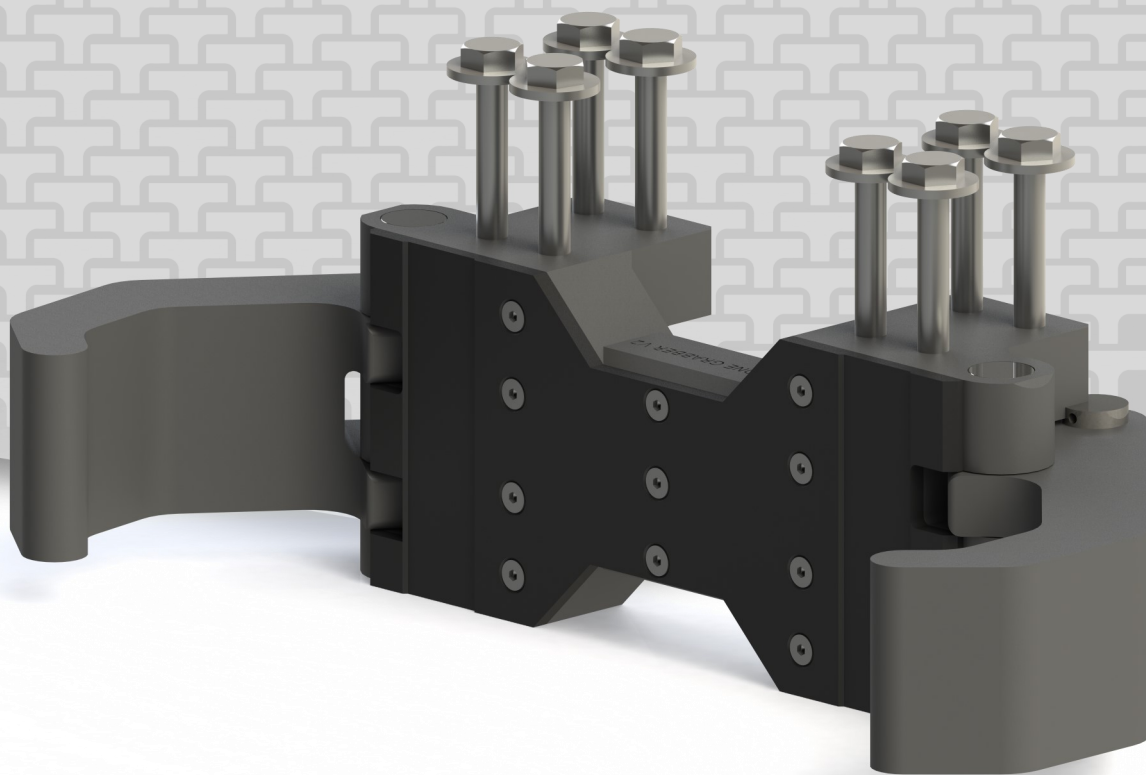


Technical Brochure

Trone Chain Grabber V2



Headquarters

No 1, Jln BJ2-7
Kawasan Perindustrian Balakong Jaya
43000 Kajang
Selangor Malaysia
T +6 03-5879 9944

E sales@trone-s-t.com
technical@trone-s-t.com

W www.trone-s-t.com

Trone Chain Grabber V2



Key features

Allows for Unmatched ROV Stability During Operation

Designed to Not Wear or Damage Chain

Easy to Integrate and Operate

Compact and Light Weight

The Trone Chain Grabber V2 is designed for use when ROV stability is required when carrying-out critical inspection tasks. The Grabber is direct mountable onto the ROV 5-Function Manipulator allowing for a wide range of ROV clamping positions, this allows the ROV operator to focus on the inspection or intervention task.

Features

Maximum Jaw Open distance	460mm +/- 20mm
Maximum Jaw Close distance	315mm +/- 20mm
Ideal Chain Diameter	100mm
Workable Chain Diameter Range	80mm—120mm

Environmental

Water Depth Rating	Full Sea Depth
Storage Temperature	-5° to +65° C
Operating Temperature	-5° to +65° C

Hydraulic

Hose Length	5-Meter x 2
Hose Fitting	JIC-4
Recommended ROV Valve	Open Center
Maximum Operating Pressure	3500Psi

Mechanical

Width	240mm
Height	140mm
Length	420mm
Weight in Air	6Kg
Wight in Water	5.5Kg
Material	7075 Grade Aluminium
Coating	Hard-Anodized